

Geospatial management and Law of the Sea: The Indian Experience

S. RAJAN

NATIONAL CENTRE FOR ANTARCTIC AND
OCEAN RESEARCH



Delineation of the outer limits of the Indian continental shelf

A major multi-institutional national endeavor implemented under the aegis of MoES.

The requisite scientific and technical data that will define and substantiate India's submission to the CLCS for an extended continental shelf have been collected, processed, interpreted, documented and

- India's first formal submission for an extended continental shelf made to the United Nations on the 11th May 2009



Delineation of the outer limits of the continental shelf

- Primarily governed by the tenets of Article 76, which seek to define the outer limit as a function of the **thickness of the sediments** from a pre-defined foot of slope or as a function of **distance** from the baseline or the foot.
- The outer limit of the continental shelf however, cannot exceed 350 nautical miles from the baselines nor shall exceed 100 nautical miles from the 2500 m isobath



the geospatial components of the continental shelf

- **Baselines and maritime boundaries**
- **200 and 350 nautical mile distances from the baselines**
- **Bathymetric information to determine the foot of the slope and 2500 m isobath**
- **information on sediment thickness**

Geospatial software and GIS tools in the delineation exercise

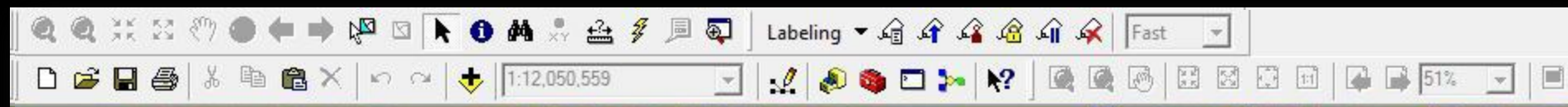
CARIS LOTS & GEOCAP:

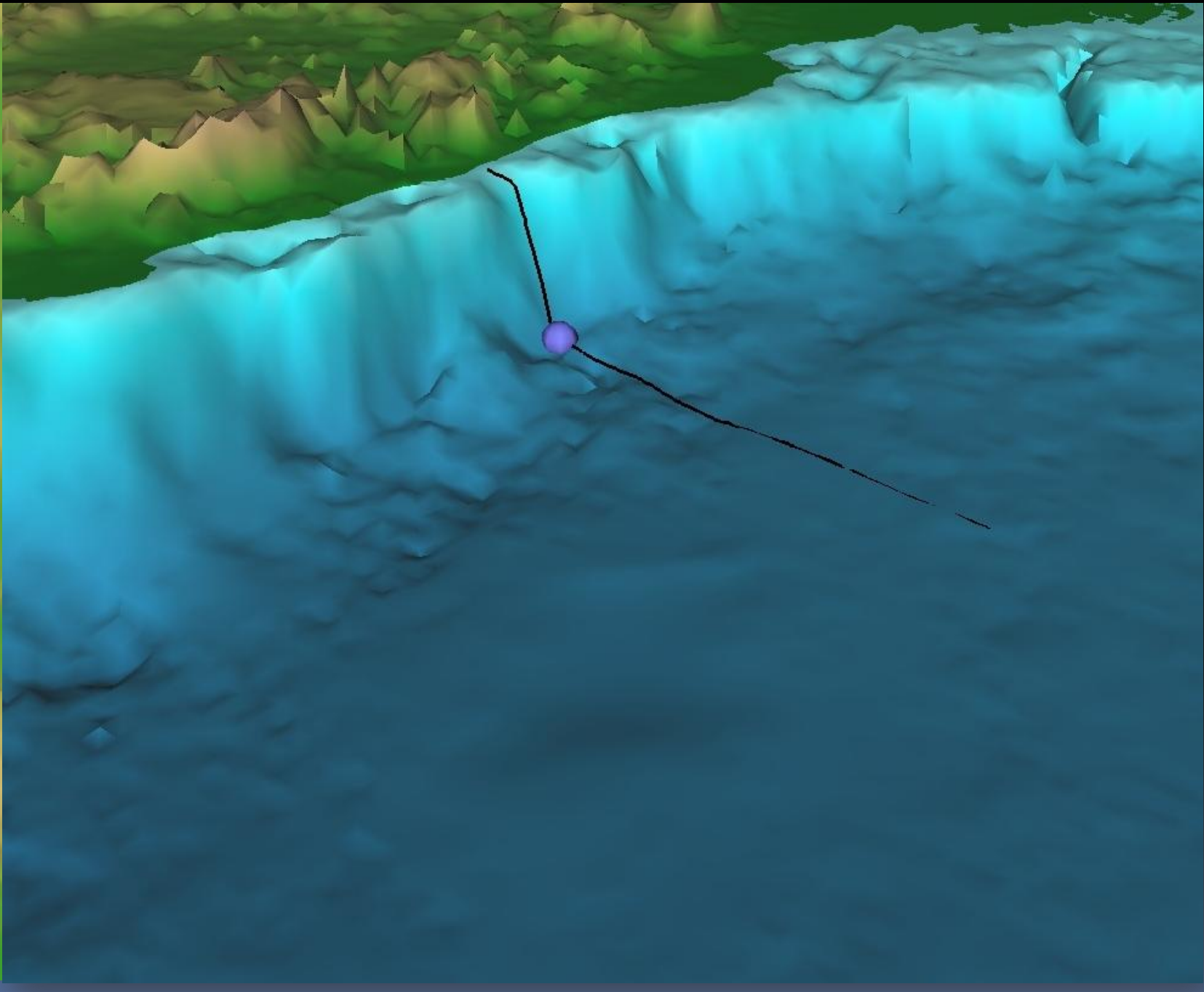
for determination of the locations of –

the 200 and 350 M distances from the baselines
the foot of the continental slope along the bathymetric
transects
sediment thicknesses as a function of the distance
from FoS

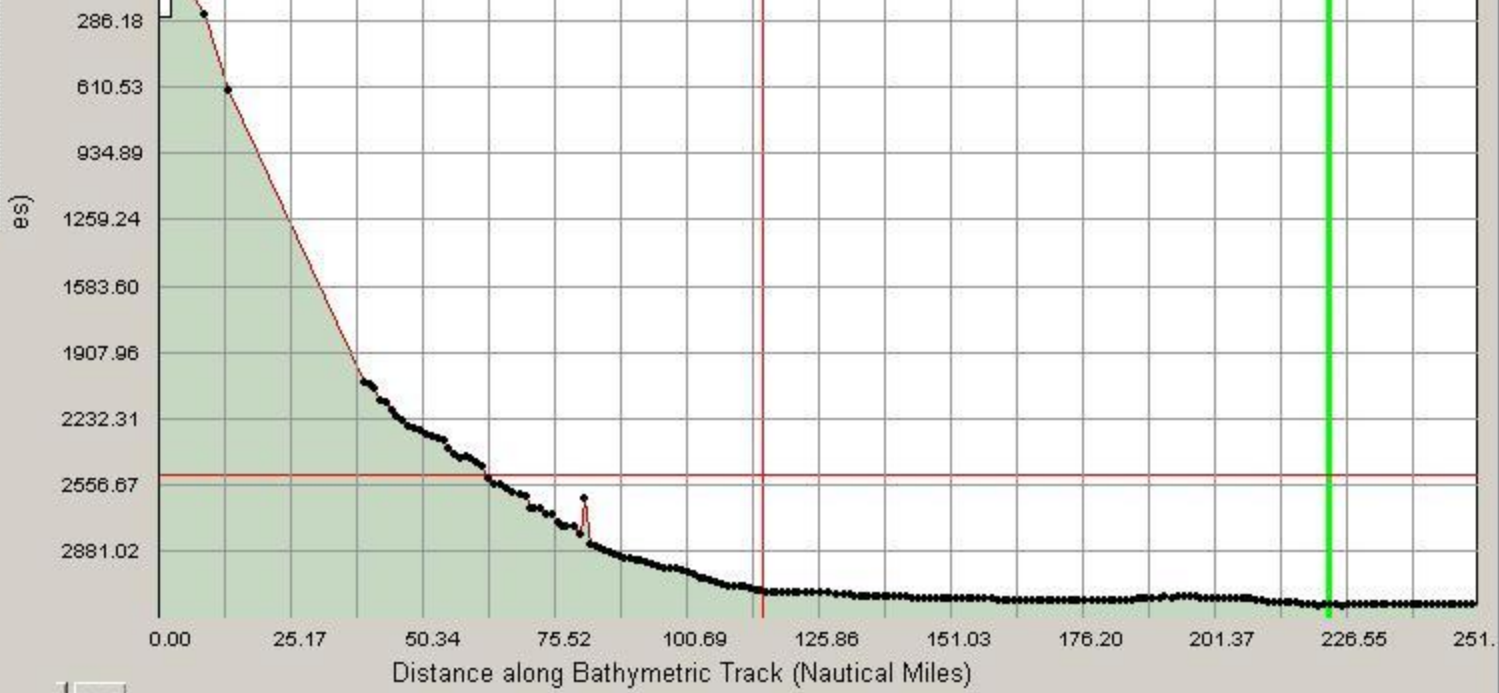
ArcGIS 9.3 APPLICATION

The final geographic visualization and depiction of the outer limits. This application facilitates storage of the various data layers either as shape files or raster maps, which can be toggled on/off.



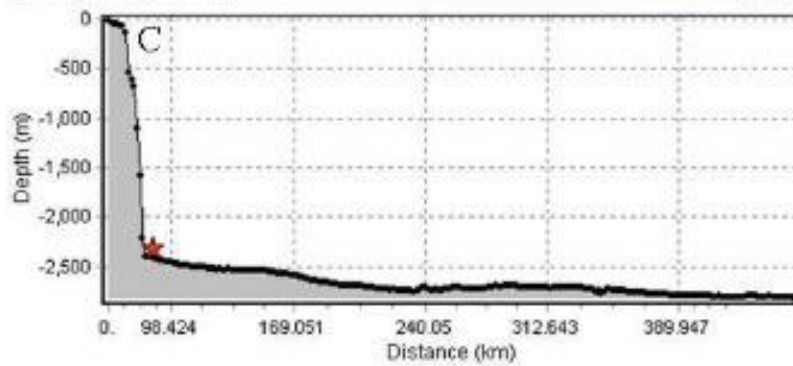
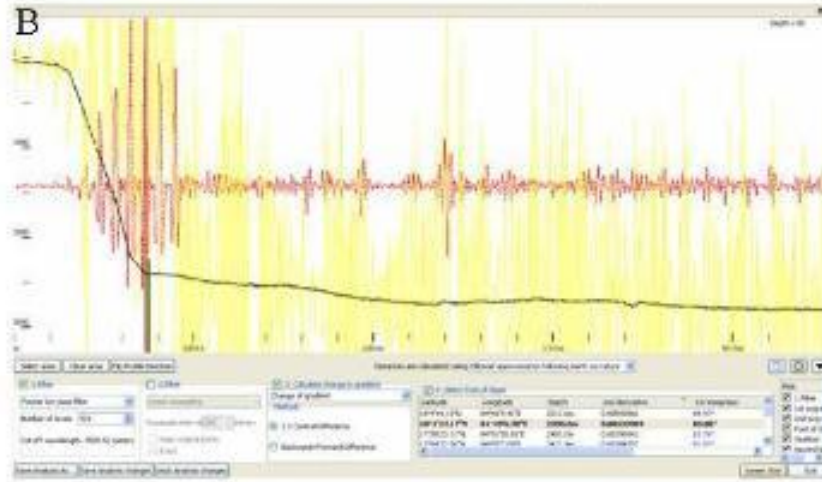
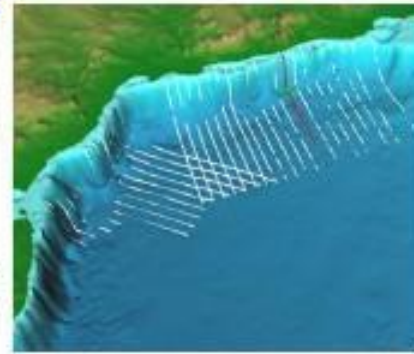
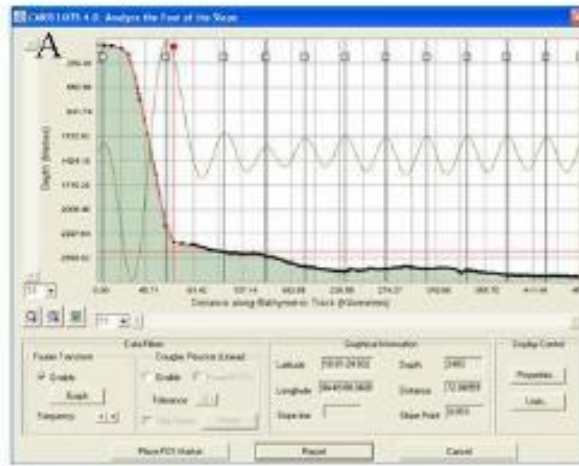


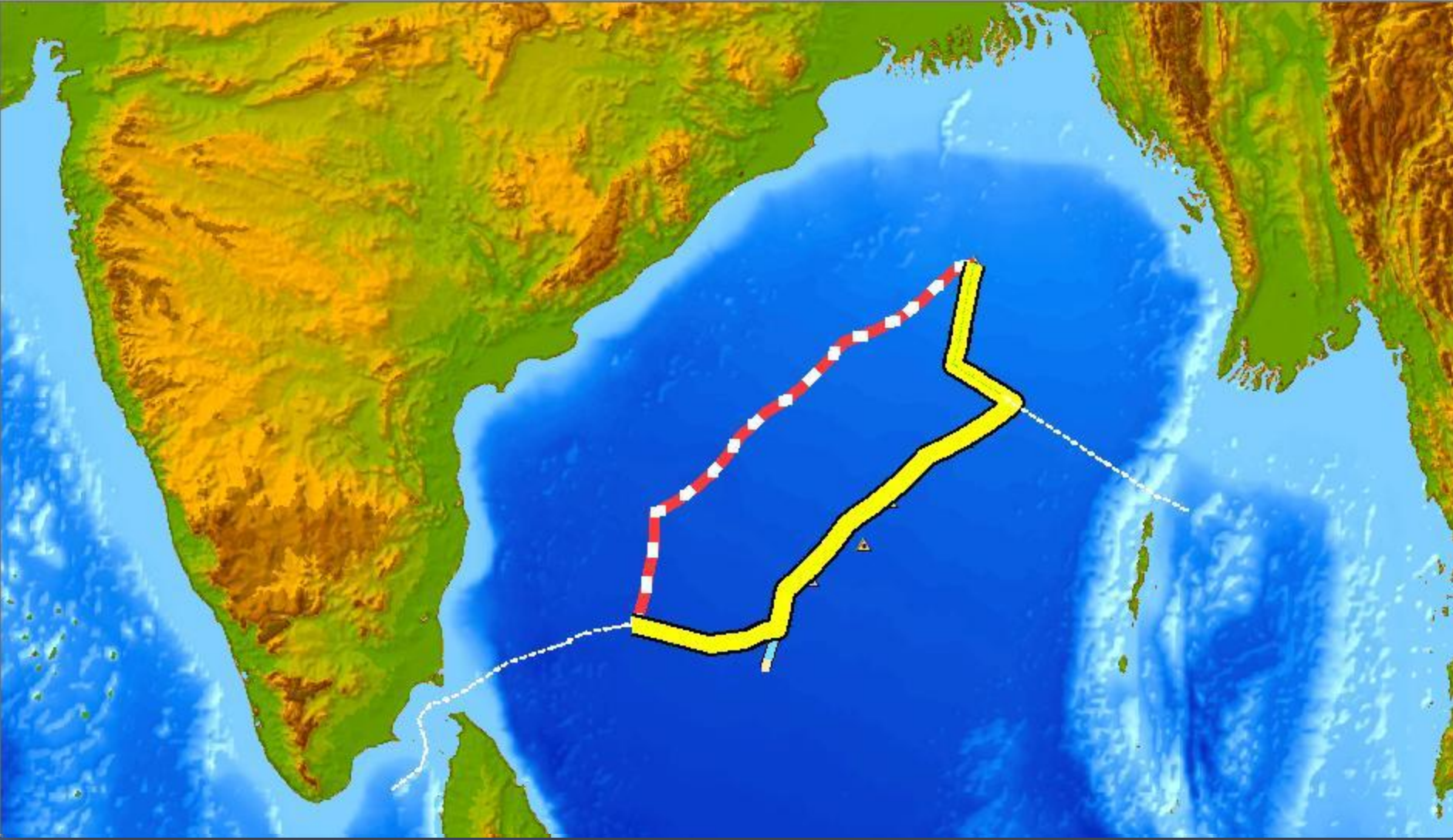
E - 14



1:1

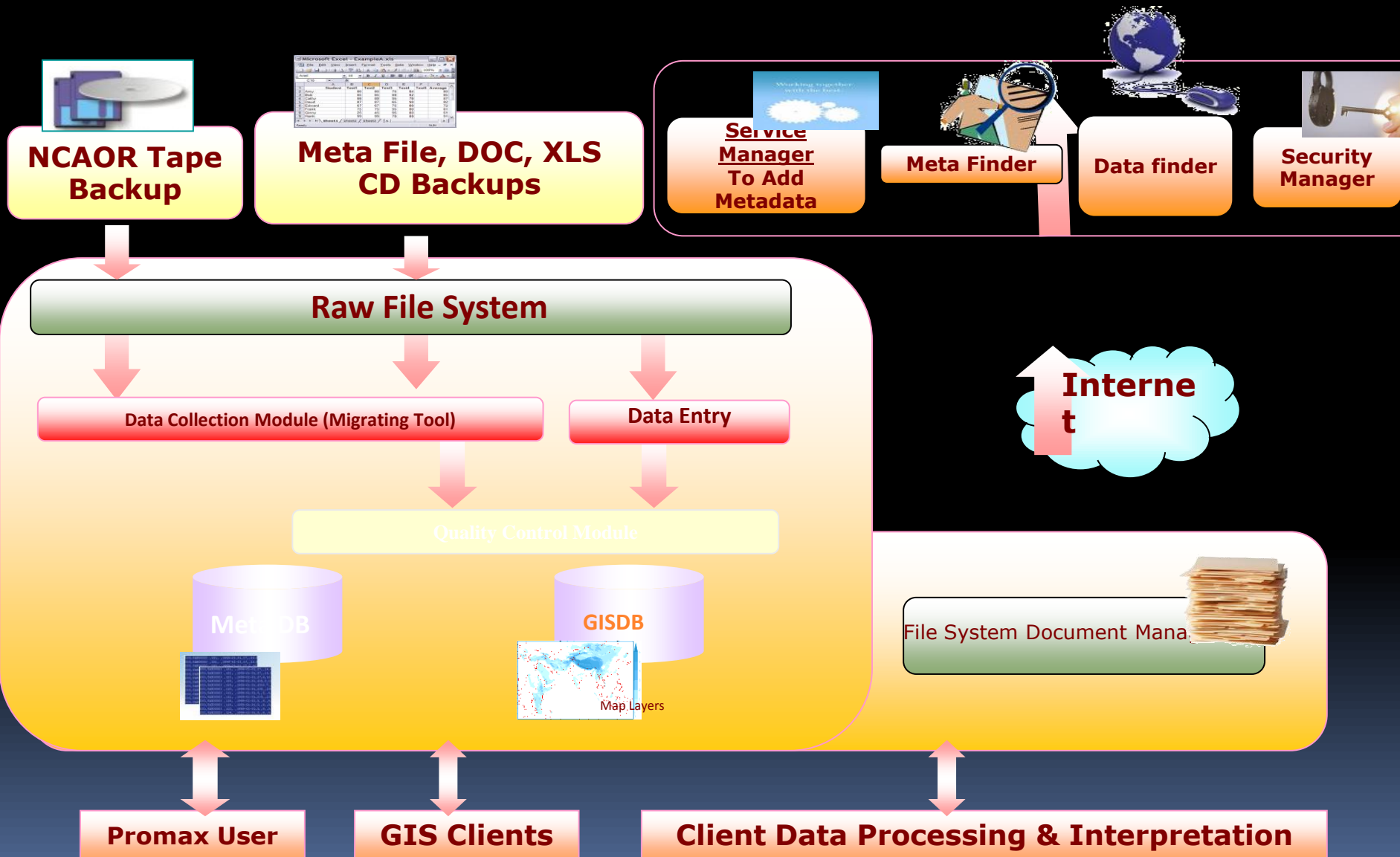
Data Filters		Graphical Information		Display Control
Transform	Douglas Peucker (Linear)	Latitude	14-31-30.383	Properties... Units...
able	<input type="checkbox"/> Enable <input type="checkbox"/> Possible FOS	Depth	3078	
Graph	Tolerance	Longitude	82-35-34.1535	
Frequency	<input type="checkbox"/> Filter Points <input type="button" value="Reset"/>	Slope line		
		Slope Point	0.00%	





**MINISTRY OF EARTH SCIENCES
NATIONAL CENTRE FOR ANTARCTIC AND OCEAN RESEARCH**

Marine Geophysical Data Centre at NCAOR





❖ [Seismic Reflection Data](#) ▶

❖ [Seismic Refraction Data](#) ▶

❖ [Gravity](#) ▶

❖ [Magnetic](#) ▶

❖ [Bathymetry](#) ▶

❖ [Others](#) ▶

❖ [Marine Geophysical Data](#)



Search : 



Search Data

[Click Here](#) ▶

Designed and Developed by Tata Consultancy Services Limited. Copyright © 2008 NCAOR, All Right Reserved

042535

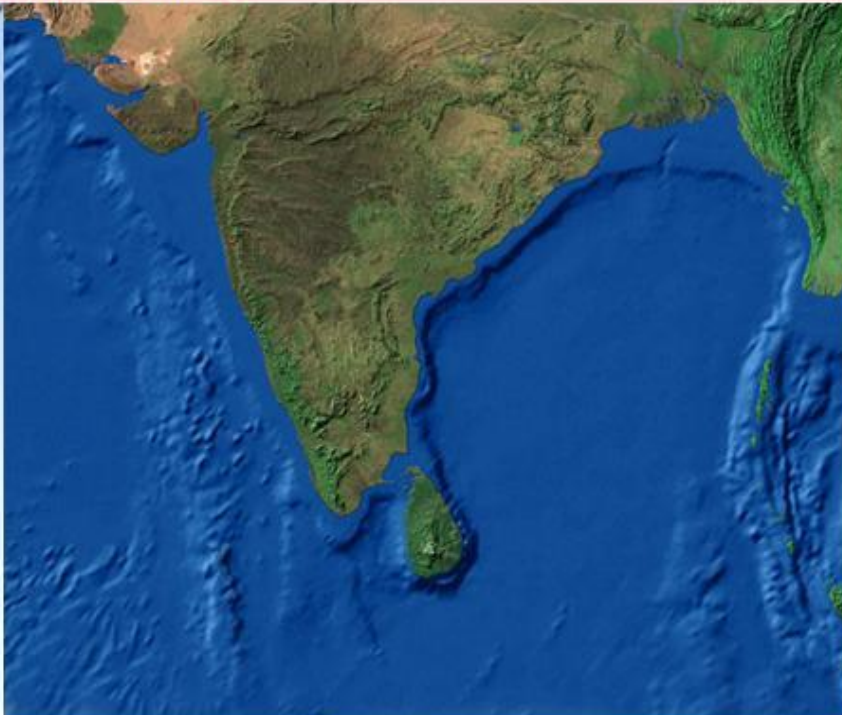
VISITOR NO since Nov 03, 2004

Last updated: September, 02 2008

Search Seismics Lines

[FAQs](#)

Tools



Search Layers:

- Display All
- Seismic Reflection Data
- Seismic Refraction Data
- Gravity Data
- Magnetic Data
- Bathymetry Data
- Other Data

[Refresh Map](#)

You can search the data in two ways:

- << Zoom the map & use the identify button to view info
- << Use the metadata search fields or the geowindow to configure a search and press Search to apply

[Search](#)

[Clear](#)

Geowindow Search: Latitude/ Longitude:

Upper Left: dec **(or)** deg/min/sec

Lower Right: dec **(or)** deg/min/sec

[Help](#) [Position](#) [Index](#)

 Survey : 0
Lines : 0

[Basket](#) [Reset](#)

Advanced Search:

- Select Option -

thanks

